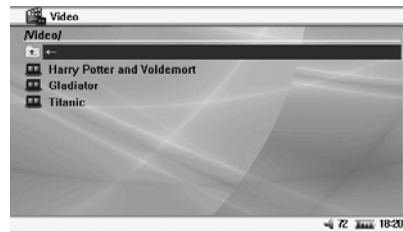




This product is compatible with Windows Me, Windows 2000, Windows XP.  
For Win 95/98/98SE, you are required to download the driver.

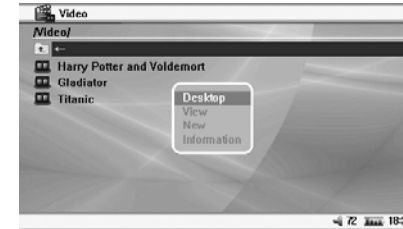
## Play Video

Select Video in the main interface and press PLAY. You will be redirected to the upper level folder and the list of video files will be displayed.



Press the MENU button to display the operation menu.

- To return to the main interface, select Desktop.
- Create, copy, move, paste, delete and rename (see operation manual for reference)
- Select File Information to open or close the file information bar.



Use the UP and DOWN buttons to navigate through the list of videos. Select the desired video and press PLAY to start.

While a video is playing, you can do the following:

- Press ESC to stop playing and return to the video file list.
- Press VOL+ or VOL- to adjust the volume.
- Press PLAY to pause, and press PLAY again to resume.
- Press UP or DOWN once to play the previous or next file.
- Press and hold UP or DOWN for over 2 seconds to search forward or backward. Release the button to resume playing.



Tip: Forward or Backward now function as video pause.

f. During video play, press MENU to show the video function menu.



(L-R: Pause, Forward, Backward, Next, Previous, Single Replay, 4:3 Display).

Note: The Single Replay button can be switched to All Replay. The display switches to 4:3 Display, 16:9 Display, Original Display and Full Screen Display by pressing 4:3 Display.

Note: Press UP or DOWN to select an option in the menu above and press PLAY to confirm.

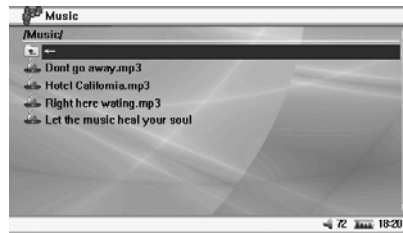
g. When selecting Forward or Backward in the menu above, you can press UP or DOWN to change how fast you want to go forward or backward (X2, X4, X8, X16), and press PLAY again to resume normal playing.



Tip: Forward or backward is functioning as if it were in Video mode, which will help you to find the correct playing spot.

## Play Music

In the main interface, select Music and press PLAY.



You will be redirected to the upper level folder and the list of audio files will be displayed.

Press MENU to show the operation menu.

- To return to the main interface, select Desktop
- Create, copy, move, paste, delete and rename (see operation manual for reference)
- Select File Information to open or close the file information bar.

Use the UP and DOWN buttons to navigate through the list of audio files. Select the desired file and press PLAY to start.

Press ESC to stop playing and return to the file list.

Press PLAY to pause, and press PLAY again to resume.

Press VOL+ or VOL- to adjust the volume.

Press UP or DOWN once to play the previous or next file.

Press and hold UP or DOWN for over 2 seconds to search forward or backward. Release the button to resume playing.

During audio play, press MENU to show the music function menu.



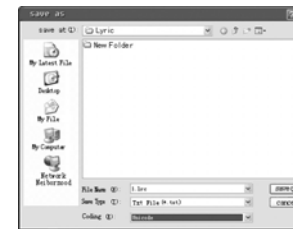
(L-R: Pause, Forward, Backward, Next, Previous, Single Replay, A-B Repeat, ID3 Info, EQ, Background Music, Lock.)

Note: The replay button can be switched to single Replay (RE), Random Play (RP), then All Replay (AR), by Pressing the Single Replay (SR) button., Press ID3 Info (ID) to show Lyric Display (LD.)

Note: Press UP or DOWN to select an option in the menu above and press PLAY to confirm. Press ESC or MENU to resume normal playing.

## Change Lyrics

The music files should contain the LRC file, which contains the file names and the lyrics in



Unicode format. Download the lyric file, open it and save as Unicode (see image below).

Select Background Music from the menu above, and return to the previous menu, where your music will still be playing.



Tip: press REB to repeat. First press as the start, second Press as the end. The interval between two presses has to exceed 3-5 seconds.

## View Picture

In the main interface, select Image and press PLAY. You will be redirected to the upper level folder and the list of image files will be displayed.

Press MENU to show the operation menu:

- To return to the main interface, select Desktop.

b. Create, copy, move, paste, delete and rename (see operation manual for reference)

c. Select File Information to open or close the file information bar.

Press PLAY and the image will be displayed on the screen.

Press ESC to stop image browsing and return to the file list.

Press UP or DOWN once to play the previous or next file.

During image browsing, press MENU to show the image function menu:



(L-R: Next, Previous, Slide Display, Set as Background, Rotate Left 90 Degrees, Rotate Right 90 Degrees, Zoom In, Zoom Out, 4 Images, 9 Images)

You can turn the slide function on or off in the menu above. The slide display interval can be set in the setting menu.

#### Set Background

Select Set as Background in the menu above, and the current image will be set as the desktop background. Images stored in the player can be set as the desktop background using this function.

Under the image zoom mode, press UP and DOWN to move the image and press PLAY to exit zoom mode.



Tips

Tip: If you would like to browse images and play music at the same time, you must start the music first, and select Background Music from the menu. You can then proceed to browse your images.

## Read E-Book

In the main interface, select E-book and press PLAY. You will be redirected to the upper level folder and the list of e-book files will be displayed.

Press MENU to show the operation menu:

- To return to the main interface, select Desktop.
- Create, copy, move, paste, delete and rename (see operation manual for reference)
- Select File Information to open or close the file information bar.

Press PLAY to read the e-book on the screen, and press UP or DOWN to turn the page forward or back.

Press Esc to stop reading the e-book and return to the file list. (If the number of pages read exceeds 10 pages, press Esc to return and display a dialogue where you can create a bookmark. Select Yes to create a bookmark or No if you do not wish to create a bookmark.)

While you are reading the e-book, press MENU to show the e-book function menu:



(L-R: Previous File, Next File.)

This device is compatible with e-books in the following formats: \*.Txt & .lrc. Note: the e-book file must be in Unicode (Please refer to Change Lyric the Play Music section.)

## Radio

When using the function of FM radio, please plug the earphones into the earphones jack, otherwise the FM radio function is unavailable. (The earphone also serves as the antenna of the FM radio.)

In the main interface, select Radio and press PLAY to start.

The default state is preset with 20 stations to choose from. Press UP or DOWN to select the desired station.

Press VOL+ or VOL- to adjust the radio volume.

During FM radio play, press MENU to show the radio function menu:



(L-R: Previous, Next, Manual Search, Auto Search, Synchronous Recording, and Background Play.) You can press UP or DOWN to select options in the function menu.

#### Manual Search

Select Manual Search and press UP or DOWN to switch the radio frequency.

Press UP or DOWN once to switch the frequency over 100 KHz; press and hold UP or DOWN for 2-3 seconds to enter the next station; Press PLAY. The FM radio will prompt you to save your preset station, select the preset station and press PLAY to save it. Press Esc to return to the preset station.

#### Auto Search

Select Auto Search and the FM radio will search all frequencies automatically (87.5MHz-108MHz) and save each station searched to the preset station (This will replace previous preset stations). If 20 preset stations are saved, the auto search will stop.

#### Synchronous Recording

During FM radio play, select Synchronous Recording to save the FM audio program; Press Pause to stop recording.

#### Background Playing

Select Background Play to continue working with other programs.



Tips

Tip: Set the sensitivity of the radio under play mode of the settings menu before searching. Please refer to the settings instructions for details.

### External Program Recording

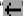
Before starting, please connect the 3in1AV cable with the player's AV In jack and the external device's AV Out jack.

- In the main interface, select Recording and press PLAY to enter recording menu.
- Select the type of Video and Audio with signal input (For music recording only) and press PLAY to confirm.
- Select the quality level of recording, high quality, medium quality or low quality and press Enter to confirm.
- Finally, select Start and press PLAY to record.
- Press Return to stop recording, turn off the player and remove the AV cable.
- During recording, press PLAY to pause/stop recording. Press PLAY again to resume recording. This function allows you to check it without recording.
- External AV device is not required for Voice recording, the audio is recorded through the MIC.

### File Operation

In the main interface, select File and press PLAY. You will be redirected to the upper level folder and the list of files will be displayed.

- Copy:** Select your file or folder, press MENU to show the operation menu and select Copy. Then press MENU in the desired folder to call the operation menu and select Paste. A Paste or Not dialog appears. Press Yes to paste or NO to cancel.
- Move:** Select your file or folder, press MENU to show the operation menu and select Move. A Move or Not dialog appears. Press Yes and then press MENU in the desired folder to call the operation menu. Press Yes to start moving the file or NO to cancel.
- Paste:** See Copy and Move above.
- Delete:** Select your file or folder, press MENU to show the operation menu and select Delete. A Delete or Not dialog appears. Press Yes to start deleting the file or NO to cancel.

e. **Rename:** Select your desired file or folder, press MENU to show the operation menu and select Rename. A character sheet appears. Press UP or DOWN to select the desired characters and press PLAY to confirm input. Press MENU to save the name or press Esc to cancel. If you get an input error, please move the cursor to the  in the top right corner of the character set. Press PLAY to delete the incorrect character.

f. **New Folder:** Press MENU to show the operation menu and select Create. A character sheet will appear. Name the folder and press MENU to save it. A new folder is successfully created.

### Resume

The Resume function is used to resume the playing of the last video or audio file played.

**If no previous video or audio was played, pressing the Resume button will result in a message stating that there is No File.**

### Setup Menu

**In the main interface, select Settings Menu and press PLAY to confirm. Press UP or DOWN to select options in the menu and press PLAY to confirm.**

#### Display

The option lets you select backlight, text color, focus text color and focus color.

- Backlight:** This lets you set how bright you want your backlight to be:: 10% (10% of total brightness), 20%(20% of total brightness) ... 100%(total brightness).
- Text color:** This allows you to select the color of your text, from 001-255.
- Focus Text color:** This allows you to select the color of your highlighted text, from 001-255.
- Focus color:** This allows you select the color of the highlight itself, from 001-255.



Tips

Tip: After changing the SD card, all the display options will return to the default.

#### System

This option lets you select Language, TV, System Info and Default Setting.

- Language:** Set the interface language: Select from Simplified Chinese, Traditional Chinese, English, German, French, Italian, Spanish, Portuguese and Japanese.

- b. TV: Set format of TV set PAL/NTSC.
- System Info: Check the company information, product name, date of version, spare capacity.
- c. Default Setting: resume the Default setting mode.

**Power**

The option lets you set the backlight setting and power off.

- a. Backlight setting: This refers to the time before the LCD automatically shuts down: select from 001-255 seconds, 000 is not available.
- b. Power off: This refers to the time before the player automatically shuts down: selecting from 001-255 seconds, 000 is not available.

**Playing Mode**

The option lets you select the image interval time, music playing mode, radio sensitivity.

- a. Image interval time: This refers to the interval between images when doing the automatic browsing, from 001-255 seconds.
- b. Music playing mode: This refers to the setting of music playing mode: random play, all replay, single replay.
- c. Sensitivity of radio: This refers to the setting of radio searching sensitivity, with high, medium and low sensitivity.

**Clock**

Set the player's clock to display on the desktop; with the ability to set year, month, day, hour, minute, and second.

**Speaker**

The speaker can be set to be on or off.

**Video play on TV**

To play the video files from this device on your television, turn the power off, connect the player (AV Out) to TV set (AV In) with the supplied AV cable. Set the television to AV mode. Turn the power on, press and hold the menu button for 3-5 seconds, and it should now be displayed on the television. Users can operate most functions via the TV screen. The volume control is not available for the player in this mode.

**Code Conversion Program**

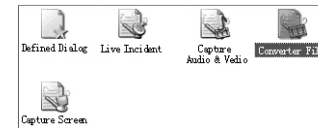
Video conversion of WMV 9:  
 Microsoft Windows Media Encoder 9 series is a very powerful tool that is able to convert audio/video into Windows Media Format. A brief introduction of the conversion process and steps of using Windows Media Encoder follows:



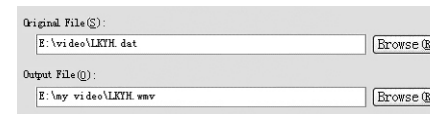
Caution: System requirements of computer  
 a. Windows Media Player 9 or a newer version must be installed.  
 b. Direct X9 must be installed.  
 c. Windows Media Encoder 9 must be installed.

Using Windows Media Encoder, you can select video files with the suffix WMV, ASF, AVI, MPG, RM, RMVB and DAT as the source file. After selecting the source file, select software conversion guide according to different requirements and select the desired specifics of the output file, such as resolution, frame rate, baud rate, etc.

1. Select Windows Start Menu -- Program -- Windows Media -- Windows Media Encoder to run the Windows Media Encoder, then select the File Conversion option.



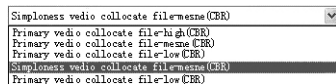
2. Select the source file to be converted in the source file window, and enter the location and name of output file.



3. Click Next and select Windows Media Hardware Configuration File. Click Next again.



4. Select Simple Video Configuration File-Medium (CBR) in the video bar.



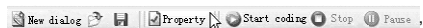
5. Select Audio Configuration File L1 (CBR) in the audio bar.



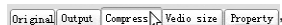
6. Click Next and fill in the information box with your favorite content or leave it empty.

7. Click Next and uncheck the option Single click "OK" to start converting, then click "OK".

8. Click Property



and select Compress



Uncheck the option Through two code, and check Time Compress.



then select edit.

9. Click 355Kbps in self-defined code setting box,



change 15fps to 30fps in frame ratio bar



then click Confirm. Press Apply again and close the Property dialog.

10. Click Start coding, and wait for it to finish

## Supplement



Environment Protection Knowledge  
Discharged packing material, batteries and used electrical products must be separated.

## Technical Specification

Product Dimension	108mmx71mmx17.4mm		
Product Weight	157g		
Screen	4 inches TFT-LCD / 480X272 RGB		
Battery	Embedded 2000mAh Li-polymer Battery 3.7V/2000mAh		
Charger	100-240V 50/60Hz AC input, 5V/2A DC output		
Memory Capabity	SD/MMC card 32MB-4GB		
Audio	Compatible	MP3 / WMA / AAC format ; 4GB for largest file	
	Code Flow Rate	1.5 Mbps	
	Sampling Rate	16/24 /32 / 44.1 / 48 KHZ	
Video	Compatible	AVI / ASF / WMV9 ; 4GB for largest file	
	Code Flow Rate	4 Mbps	Frame Rate 30 frames / s
	Sampling Rate	NTSC / PAL dual format	Resolution 702X480
Radio	SNR	S / N : 30dB; 10 preset channels	
	Frequency	87.5-108MHz	
Image	Compatible	JPEG / BMP / GIF format, with functions of slide, background music and image preview.	
	Pixel	Largest Pixel: 3264X2448 Largest File 10 MB	
E-book	Support TXT(in unicode)<4.5MB		
Video Recording	Format	MPEG-4.asf format , with largest file of 4GB	
	Resolution	320X240	
	Code Flow Rate	4M bps	
Audio Recording	Format	MP3 format with largest fiel of 4GB	
	Sampling Rate	low sensitivity 16KHz.32Kbps	
		common sensitivity 24KHz.64Kbps	
		high sensitivity 32KHz.96Kbps	
	Output	φ 2.5mm sound / video joint	
Input	φ 2.5mm sound / video joint		
USB	USB 2.0 full speed		
Language	English, German, Italian, Spanish, Dutch, Korean, Russian, Japanese, French, Portuguese, Simplified Chinese, Traditional Chinese.		
Operation System	Compatible with Windows98/98SE/ME/2000/XP system platform		

## Safety Declaration

This device complies with part 15 of the FCC rules. Operation is subject to the following two conditions:

- a. The device may not cause harmful interference, and
- b. This device must accept any interference received, including interference that may cause undesired operation.

## Copyright Declaration

---

No part of this manual may be copied, republished, reproduced, transmitted or distributed in any way without prior written consent of Nextar, Inc. Any unauthorized distribution of this manual is expressly forbidden.

Nextar is a registered trademark of Tofasco, Inc.

Nextar may find it necessary to modify, amend or otherwise change or update this manual. We reserve the right to do this at any time, without any prior notice. All specifications and features are subject to change without notice. All screenshots shown are simulated and may not represent the actual screen on production unit sold to consumers.

For information on this product its operation and accessories, visit us on the web at:

<http://www.nextar.com>

or write to us at :

Nextar Inc.  
1661 Fairplex Drive  
La Verne, CA 91750  
USA

Copyright © 2006 Nextar Inc.  
All Rights Reserved